

The Artist Experience from iBiquity

For

Center Stage Live

With

Album Art from Tag Station/Next Radio

CSRDS - The Artist Experience

Overview

Support for The Artist Experience via iBiquity's JMSAC version 2.0.2 and higher has been added to CSRDS with version 8.6.1045 and higher. The JMSAC software is available from your hardware supplier and for existing Center Stage Live users with a support license, the CSRDS update is available via your live updater. To update your system, select "Check for Update" in the Tools Menu of CSScheduler or run CSUpdate from the Center Stage Installation directory.

For stations without a support license, contact your software supplier or Arctic Palm at sales@arcticpalm.com for information on and pricing for updating your software.

Album Art

To include Album Art on HD Receivers, you will require a subscription to Tag Station which will provide the artwork with the necessary rights to use the artwork on your HD systems. For more information, contact Tag Station at www.tagstation.com.

Station Logo/Local Artwork

Station Logos or other station controlled artwork can be added using the CSScheduler module included in the Center Stage Live package. Station Logos are added using the Station's and Logos option in the Tools Menu while artwork can be added to any scheduled event. (See the CSScheduler section)

iBiquity Artwork File Sizing Specifications

Cover art and station logo native image resolution shall be within 170 to 200 pixels (horizontal) by 170 to 200 pixels (vertical).

- Square images (200 x 200) are preferred
- Images may be either gray-scale or color
- Gray-scale images shall be eight bits per pixel
- Color images shall have a bit depth of 24 bits (eight bits each for red, green, and blue)
- File size: 24 kbyte maximum, 12 kbyte nominal.

Station logo images shall be designed for receiver display on a black or dark gray background.

Adhering to these categories will prevent rescaling distortion or cropping in receivers. Deviation from these dimensions may create significantly sub-optimal display.

For the best possible display please refer to the iBiquity documentation HD Radio™ System Synchronized and Non-Synchronized Image Transfer - Image Resolutions and File Sizes section for details.

Artwork Usage

The rights to the Album Art supplied by Tag Station is limited to use on HD systems only. However, artwork created by the station or supplied to the station may be used on other devices and services and may be included in Center Stage feeds using the merge code *****GRAPHIC***** in the FTP or Streaming template. This includes Tag Station Scheduled or Campaign artwork as well as artwork assigned in CSScheduler.

While Center Stage provides the ability to send links to the artwork to other devices and services, it is the stations responsibility to ensure they have the necessary rights to use the artwork on these devices and services.

Timing Disclaimer

The time required to capture and post artwork to the HD system is dependant on a number of factors including the number of HD feeds, size of the artwork, band width, etc. The iBiquity documentation describes the formula for calculating bandwidth required for the artwork but artwork for short duration events such as commercials may not have time to transfer to the HD receiver before the event is over. The PAD data will appear but the artwork may be missed.

CSRDS - The Artist Experience

CS Scheduler - Station Logos

To add your station logo:

1. Create the logo file as per the iBiquity File Size settings
2. Start CSScheduler and Select Stations and Logos from the Tools Menu



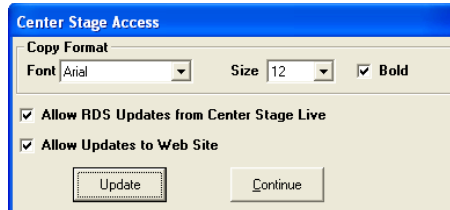
3. Enter the Station ID or click the entry in the Station List
4. Use the Browse Command to find and open the station logo artwork file
5. Click Update Station
6. Repeat for all other station's and Click Update when completed

Station logos need only be added once. However, should the logo change, use the same process to select the new logo. Once updated, CSRDS will post the new logo to the HD System.

CSRDS - The Artist Experience

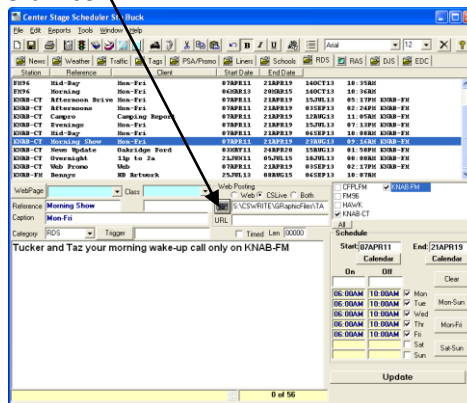
CS Scheduler – Local Artwork

Scheduled events may also be assigned artwork as they are scheduled. This will require the Scheduler to be allowed Web access. This is done in the CSScheduler using the Center Stage Access Control option in the Tools Menu. When the control window opens, check the Allow Update to Web Site Option and click Update.

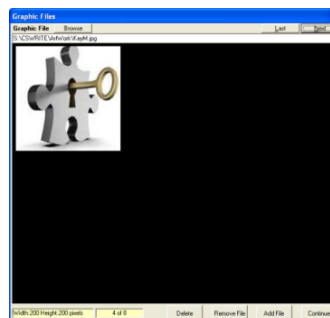


To add artwork to a scheduled event:

1. Start CSScheduler and click the RDS tab
2. Schedule the message as normal by entering the Reference, Caption, Selecting the station, entering the message and setting the start date, end date, on and off times and days of the week.
3. To Add the artwork, click the “camera” icon



4. When the Graphics Window opens use the Browse command to select the artwork directory. This will scan the directory for all artwork files. Use the Next / Prev commands to scan for the correct file. When Found, Click Add File.



5. Once selected, the program will return to the main scheduler window. Click Update to add the message with the artwork. The next time the message is posted, the artwork will be passed to the HD System

Note: It can take several seconds for the artwork to be passed to the HD system and if the message is only shown for a short time, the PAD data may appear while the artwork may be missed.

Artwork may be copyrighted and only used as specified by the artwork creator/owner. Please ensure you have the necessary rights for any artwork added in CSScheduler for use on HD, Web, Streaming players or other devices and services.

CSRDS - The Artist Experience

Sending Local Artwork to Other Devices and Services

If desired, a link to local artwork that has been uploaded to a web site can be added to metadata files posted to the stations web site or streaming player using the *****GRAPHIC***** merge code. (See RDS Templates.PDF for more information). When selected in CSScheduler the path to the artwork will be the local network. Using the Web LogIns option in the CSScheduler Tools Menu you can enter the URL path where the artwork uploaded. The URL will replace the local path when posted in the template. For Example: the CSScheduler path S:\CenterStage\Artwork\Logo.jpg could be replaced by <http://www.mysite.com/logos/Logo.jpg> in the template.

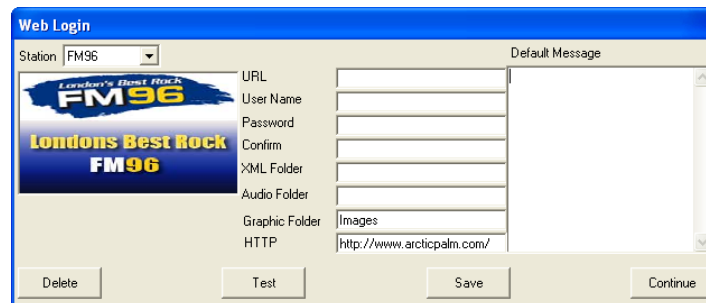
Web Login

CSScheduler can be used to schedule content beyond metadata to the stations web site using the live copy features in CSScheduler via the CPostIt module. The Web Login information is used by CPostIt to upload these items to the stations web site based on the Web Login information.

If we are only including links to the artwork in our templates we only need to include the HTTP and the Graphic Folder where the artwork is uploaded for use in for the template.

To configure the URL Link:

1. In CSScheduler select Web Logins from the Tools Menu



2. When the window opens, select the Station from the Drop Down List
3. Use the Graphics Folder area to enter the folder on the site where the artwork has been uploaded
4. Use the HTTP area to enter the URL to the site
5. For this process just Click Save

Once configured, the *****GRAPHIC***** merge code will use these fields to create the URL link for the Web and/or Streaming developers.