

Overview

The CSLogIt program will allow a remote producer/host to create a run log for the show files they are creating for the host station. Once created the playlist can be used to time and build the actual audio file(s). When completed, the Producer/Host the program will upload both the playlist and audio files to the host station where our Center Stage Radio Automation Simulator (CSRAS) will post the audio files to the automation systems import directory and prepare the playlist for on-air use. The playlist will then be used to send the now playing information to RDS\RBDS encoders, the stations Web Site, streaming systems, HD systems as well as record the events for internal reporting.

The CSLogIt module is available free of charge from Arctic Palm Technology Inc. and can be downloaded from the Download Page at www.arcticpalm.com. Once downloaded and installed, the first time the program is run it will ask for an Authentication File. This file will be created at the hosting station using the CSRAS module and e-mailed to the remote Producer/Host.

Features

The CSLogIt program is a simplified Playlist creation program where information about songs can be entered and added to the playlist. Once a song is entered, the information will be stored eliminating the need to re-enter songs. In addition to music, the program will also accept non-music events such as Voice Tracks, Jingles, Commercials, or Other events.

Since the playlist is not actually playing the event, it is possible that over time, the playlist times get out of line. IN order to minimize this effect we can also add a "Set Time" event that will reset the clock time to the specified time.

Playlist can be created or modified using the CSLogIt window or several items can be added at one time using the playlist window. Once the Playlist is created, it can be viewed or printed and used to create the actual audio file(s).

When completed, the Send To Host command will upload both the Playlist and Audio file(s) to the Host Station.

Authorization

As the name implies, the Authorization File is used by CSLogIt – Remote authorize the Producer/Host for CSLogIt. The authorization file defines the dates, days-of the week and times of the day the Producer/Host is authorized to create playlist and audio files for use at the station.

CSLogIt – Remote Installation

Step 1. Download the Program from Arctic Palm

1. Using your Internet Browser go to <http://www.arcticpalm.com>
2. Click the Download Tab to open the download page
3. Click the CSLogIt icon to begin the download
4. When requested, Click Run

Step 2. Install the Software

1. When Requested to Install the software, click Yes
2. When Requested Click Setup to begin the installation process
3. Close any applications and click OK
4. Click the Computer Icon to Install the Software
5. Review the License Agreement and Click I Agree to continue
6. Click Continue to use the Default settings
7. Should you receive any Version Conflicts, ALWAYS click Yes to keep your existing Version

Step 3. Authenticate the Software

1. Open your E-Mail and save the attachment (CSRAS#####.RLG) from the Hosting Station.
2. Using the desktop icon or Start Menu item start CSLogIt
3. When the browser window opens, browse to the attachment and click Open
4. CSLogIt is now authenticated and ready to use

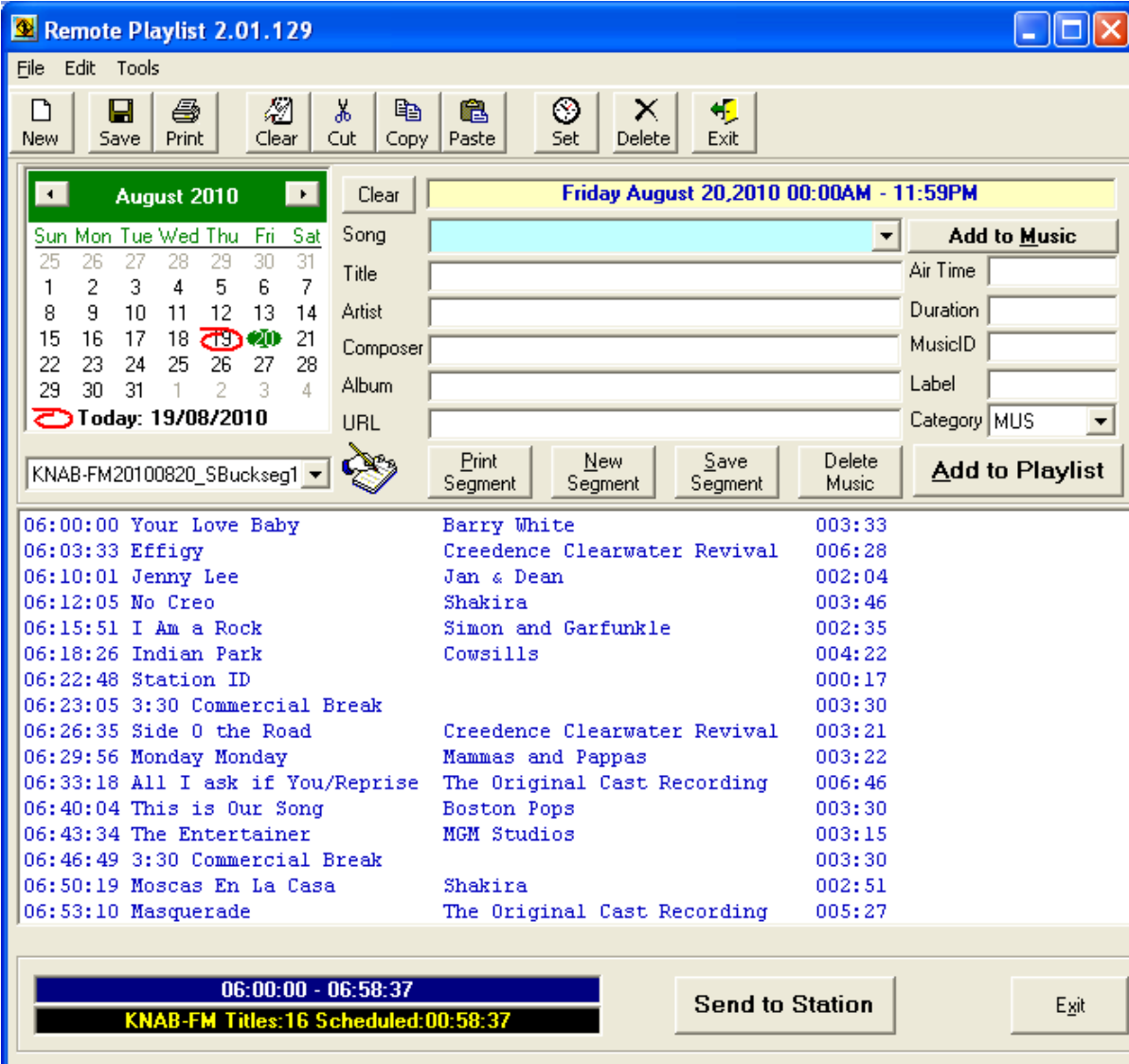
**Note: The authentication file contains a "use by" date and if not authenticated by this date, the authentication file is not valid.*

Creating a Playlist

In addition to a live playlist when in Live Assist mode where the on-air talent will manually send the metadata as events are played, we may wish to create a playlist for automated periods where there is no one in the studio. We can do this using the Center Stage Radio Automation Simulator module CSRAS.

Using the CSRAS window we create a playlist with the times the events will be played in the automated period and CSRAS will automatically send the metadata based on the scheduled time. Since the item will be sent based on the scheduled time, it is important to keep the timings as accurate as possible.

Each day part or segment is created as a separate segment playlist covering a continuous period. Each segment is for a separate automated day part without an automation feed. For example we may have the first segment as 3pm to 5pm and a second segment from 8pm to midnight.



Remote Playlist 2.01.129

File Edit Tools

New Save Print Clear Cut Copy Paste Set Delete Exit

August 2010

Clear **Friday August 20, 2010 00:00AM - 11:59PM**

Sun	Mon	Tue	Wed	Thu	Fri	Sat
25	26	27	28	29	30	31
1	2	3	4	5	6	7
8	9	10	11	12	13	14
15	16	17	18	19	20	21
22	23	24	25	26	27	28
29	30	31	1	2	3	4

Today: 19/08/2010

KNAB-FM20100820_SBUckseg1

Song: **Add to Music**

Title: Air Time:

Artist: Duration:

Composer: MusicID:

Album: Label:

URL: Category: MUS

Print Segment New Segment Save Segment Delete Music **Add to Playlist**

06:00:00	Your Love Baby	Barry White	003:33
06:03:33	Effigy	Creedence Clearwater Revival	006:28
06:10:01	Jenny Lee	Jan & Dean	002:04
06:12:05	No Creo	Shakira	003:46
06:15:51	I Am a Rock	Simon and Garfunkle	002:35
06:18:26	Indian Park	Cowsills	004:22
06:22:48	Station ID		000:17
06:23:05	3:30 Commercial Break		003:30
06:26:35	Side O the Road	Creedence Clearwater Revival	003:21
06:29:56	Monday Monday	Mammas and Pappas	003:22
06:33:18	All I ask if You/Reprise	The Original Cast Recording	006:46
06:40:04	This is Our Song	Boston Pops	003:30
06:43:34	The Entertainer	MGM Studios	003:15
06:46:49	3:30 Commercial Break		003:30
06:50:19	Moscas En La Casa	Shakira	002:51
06:53:10	Masquerade	The Original Cast Recording	005:27

06:00:00 - 06:58:37

KNAB-FM Titles:16 Scheduled:00:58:37

Send to Station Exit

CSRAS Playlist Editor

Date	Using the Calendar select the date for the Playlist. Once selected, CSRAS will assign the segment name based on the station and the date.
Air Time	Before adding any entries for this segment enter the segment's start time in the Air Time area. This only needs to be done on the first entry, when forcing a set time or when resetting the time for the segment.
Adding Songs	Songs are added to the playlist in the same manor as for a Live Playlist. They can be selected from the dropdown list, entering a few characters of the name or we can access the entire song list by clicking the Notepad icon. The log times will be automatically calculated based on the duration for each event.
<p>Non-Music Entries</p> <p>Since CSRAS will send the metadata based on the scheduled time we will need to add non-music events such as Commercial breaks, Voice Tracks, News, Weather, Sports, etc. To do this we enter the Title for the event, the duration and select the Category from the drop down list.</p> <p>The Categories include the following:</p>	
MUS	This is the category used for songs and all items in this category will be displayed in the RDS outputs.
OTH	This category is used for non-music events such as news, sports, voice tracks, etc. This information will keep the playlist on time but these entries do not appear in the RDS outputs.
COM	Use this category for commercial breaks. If available we could add one entry for each sponsor or as a single break. This information will be used to inform the subsitiution site that commercials are playing and they will need to substitute the audio for the stream.
SET	This is a special command to force the playlist to a specific time. Should other events be off by a few seconds the Set command can be used to force the playlist back to a set time. For example if we have a specific event that starts at a specific time, we can enter this time as a set event which will force the rest of the playlist to synchronize to this time.

CSRAS Commands

New	New Segment Command or New Icon in the Toolbar creates a new segment file for another day part.
Save	Save Segment Command or Save Icon in the Toolbar saves the playlist ready for CSRAS to use on the selected date and time.
Print	Print Segment Command or Printer Icon in the Toolbar to print a copy of the playlist.
Delete a Song	Delete Music command will delete the selected song from the playlist library
Add a Song	Add to Music will add a new song to the playlist library
Add to Playlist	This will add the selected song to the playlist at the selected point.

Other Toolbar Commands

Clear	This command will delete all items from the selected Playlist
Cut/Copy/Paste	Use these commands to copy or move the selected items to the existing or new segments
Set	Enter a new start time for the segment and click the Set command to reset the time of the segement.
Delete	Use this command to delete the segement file.
Exit	Using this command to close the Playlist editor and return to the CSLogIt window.

Play List Window

Playlist			
Artist	New Song	00:34	
Barry White	Your Love Baby	00:33	
Boston Pops	Sad Song to Me	00:43	
Boston Pops	You and I	00:33	
Christeen	A Photo Album	00:42	
Cowells	Indian Park	00:42	
Credence Clearwater Revival	Don't Look Now	00:08	
Credence Clearwater Revival	Down on the Corner	00:43	
Credence Clearwater Revival	Tiffy	00:28	
Credence Clearwater Revival	Feelin' Blue	00:05	
Credence Clearwater Revival	Fortunate Son	00:20	
Credence Clearwater Revival	Knocky Shuffle	00:25	
Credence Clearwater Revival	Froud Mary	00:42	
Credence Clearwater Revival	Slide O the Road	00:21	
Credence Clearwater Revival	The Midnight Special	00:41	
Jan & Dean	Prag City	00:15	
Jan & Dean	Jenny Lee	00:04	
Jan & Dean	Those Were The Days	00:46	
Jana	Yesterday	00:42	
KISS	We are not going to	00:30	
Local	Commercial Break	00:30	
Monas and Pappas	Monday Monday	00:22	
NBM Studios	The Entertainer	00:15	
next artist	next song	00:42	
Shakira	Ciega Sordomuda	00:42	
Shakira	Donde Estan Kos Ladr	00:33	
Shakira	Estoy Aquí	00:02	
Shakira	Inevitable	00:23	
Shakira	Moscú En la Casa	00:21	
Shakira	No Creo	00:46	
Shakira	Octavo Día	00:49	
Shakira	Open Arm	00:43	
Shakira	Si Tu Vias	00:16	
Shakira	Shakira De Ti	00:00	
Shakira	Tu	00:16	
Simon and Garfunkel	America	00:24	
Simon and Garfunkel	Cecilia	00:33	
Simon and Garfunkel	Kathy's Song	00:16	
Simon and Garfunkel	I Am a Rock	00:35	
Simon and Garfunkel	Sounds of Silence	00:42	
Station ID	Station ID	00:17	
The Beatles	Lucy in the Sky with Diamonds	00:42	
The Original Cast Recording	All I ask if You/Exp	00:46	
The Original Cast Recording	Angle of Music	00:20	
The Original Cast Recording	Down Once More	01:35	
The Original Cast Recording	Entr'acte	00:40	
The Original Cast Recording	Madrigale	00:27	
The Original Cast Recording	Overture	00:07	
The Original Cast Recording	Prima Donna	00:49	
The Original Cast Recording	The Harem (angle of	00:17	
The Original Cast Recording	The Music of the Sky	00:12	
The Original Cast Recording	The Phantom of the O	00:17	
The Original Cast Recording	The Point of No Retu	00:17	
The Original Cast Recording	Think of Me	00:09	
The Original Cast Recording	Wishing you were Son	00:05	
** Intro		00:10	
Angle of Music	The Original Cast Recording	00:20	
Indian Park	Cowells	00:42	
Paulin Blue	Credence Clearwater Revival	00:05	
Inevitable	Shakira	00:23	
** Commercial Break		00:30	
The Midnight Special	Credence Clearwater Revival	00:41	
Kathy's Song	Simon and Garfunkel	00:16	
Your Love Baby	Barry White	00:33	
Down Once More	Credence Clearwater Revival	00:28	
** Commercial Break	The Original Cast Recording	01:35	
Jenny Lee	Jan & Dean	00:04	
** VT Next Hour		00:21	
Those Were The Days	Jana	00:46	
Wishing you were Somewh	The Original Cast Recording	00:05	
Henry Agui	Shakira	00:02	
The Music of the Night	The Original Cast Recording	00:12	
Tu	Shakira	00:16	
Ciega Sordomuda	Shakira	00:42	
Froud Mary	Credence Clearwater Revival	00:42	
I Am a Rock	Simon and Garfunkel	00:35	
Yesterday	Jana	00:42	
All I ask if You/Deprise	The Original Cast Recording	00:46	
** Commercial Break		00:30	
The Music of the Night	The Original Cast Recording	00:12	
Tu	Shakira	00:16	
Slide O the Road	Credence Clearwater Revival	00:21	
A Photo Album	Christeen	00:42	
Lucy in the Sky with Diam	The Beatles	00:42	
** Intro		00:10	
Angle of Music	The Original Cast Recording	00:20	
Indian Park	Cowells	00:42	
Paulin Blue	Credence Clearwater Revival	00:05	
Inevitable	Shakira	00:23	
** Commercial Break		00:30	
The Midnight Special	Credence Clearwater Revival	00:41	
Kathy's Song	Simon and Garfunkel	00:16	
Wishing you were Somewh	The Original Cast Recording	00:05	
No Creo	Shakira	00:46	
** Closing		00:32	
Octavo Dia	Shakira	00:49	
Prag City	Jan & Dean	00:15	

By Artist By Title

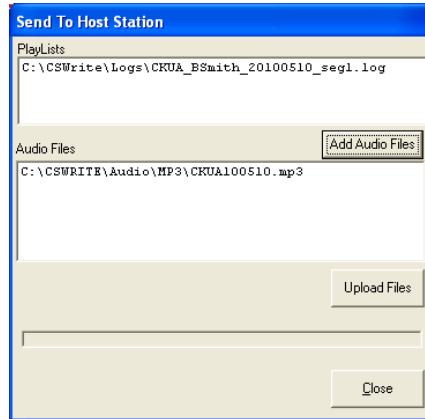
Selected	Time	Start	End Time	Clear	Update	Continue
43	2:30:35	06:00:00	08:30:35			

The left window has a complete list of all songs in the music file. This list can be viewed by song title or artist/title. To add a song to the playlist, double click the song, or select one or more songs and click the Add to Playlist command.

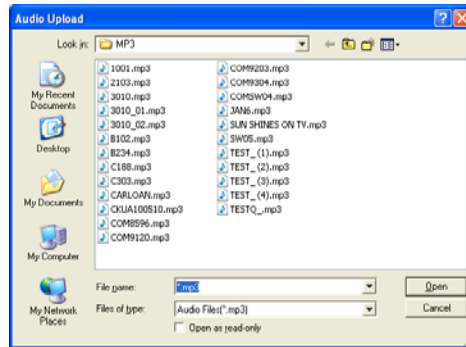
As items are added to the playlist the number of items and time will be shown at the bottom of the window. When completed, click Update to update the playlist and return to the main window, click continue to return to the main window WITHOUT updating the play list, or click Clear to remove all items from the playlist.

Send To Station

When the playlist and audio files are ready to upload, click the Send to Host command in the main window to open the transfer window.



When opened, the playlist files to be sent to the host station will be listed in the top portion of the window. To add the audio files, click the Add Audio Files to open the browser to add the audio files to the upload list.



Using the browser processes, go to the directory where the audio files are saved and select the file(s) to be uploaded and click Open.

When ready click the Upload Files command to start the transfer.

During this process, the program will validate the connection to the host and transfer the files to the Host Station. Depending on the number and size of these files, this process could take some time. While the program may appear to be at a standstill and may even report the (Not Responding) message, files are being transferred and you will be notified when this process is complete.