

## Overview

CSPRM is an Add-On for the Center Stage Live to monitor and capture now playing information from the Public Radio Satellite Service (PRSS) Content Depot MetaPub Service. CSPRM will be installed in the Center Stage Live installation directory is configured with the schedules for the various MetaPub programming.

Programs are scheduled by Station, Date, Time-Of-Day and Day-Of-Week and if required the capture can be time shifted several hours for different Time zones or delayed programming. Longer delays or repeat broadcast can be configured using the Repeat Broadcast functions included in the Center Stage Live package.

Once configured, CSPRM will capture the metadata from the MetaPub service and send it to Center Stage Live's CSRDS module for posting to RDS\RBDS FM Receivers, HD Radio, The Artist Experience for the PRSS artwork, Web Sites, Streaming Services, web services such as TagStation/Next Radio, IHeartRadio, TuneIn, etc.

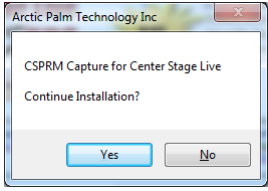
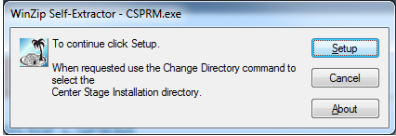


## System Requirements

CSPRM will run on the same computer as CSRDS and will require Internet Access to monitor the MetaPub Service. Like CSRDS, CSPRM will run on any computer running Windows XP, 7, 8, 10 or Windows Server operating systems.

Center Stage Live is required for CSPRM and for the purposes of this document it is assumed your Center Stage Live installation is configured with at least one instance of CSRDS. If running MetaPub for the entire day a single instance of CSPRM is all that is needed. If MetaPub is used for some day parts and another source for other day parts you will need to run a Local and Remote instance of CSRDS.

## Installing CSPRM

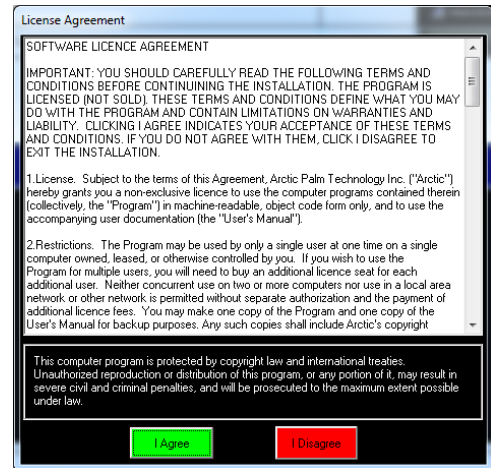
To install the CSPRM Add-On for Center Stage Live us as follows. You Will need Administrator Rights to install the software.

<p>1. Download the installation set from <a href="http://www.arcticpalm.com/Downloads/CSPRM.exe">http://www.arcticpalm.com/Downloads/CSPRM.exe</a></p>	<p>When Requested, select Save to download the install set to your computer or select Run to install the software on the download computer.</p>
<p>2. Run the Installation Set.</p>	<p>If Security Warnings are displayed, select Run Anyway. Depending on your Security Software you may need to Select More Option and/or stop the timer.</p>
<p>3. When Requested Click Yes to begin the installation process</p>	
<p>4. Extract the Install Set and Click Setup to install the software.</p>	
<p>5. At the Welcome Window click OK.</p>	
<p>6. If necessary use the yellow Change Directory command to select the path where Center Stage Live is installed. If Center Stage Live is installed on another computer or network server you will need to select the Center Stage Live installation directory on that computer. Depending on your version of Windows and settings, mapped drives may not show in the Change Directory window. If not, use the UNC path to the Center Stage For Example: <b>\\Server123\CenterStage.</b></p>	

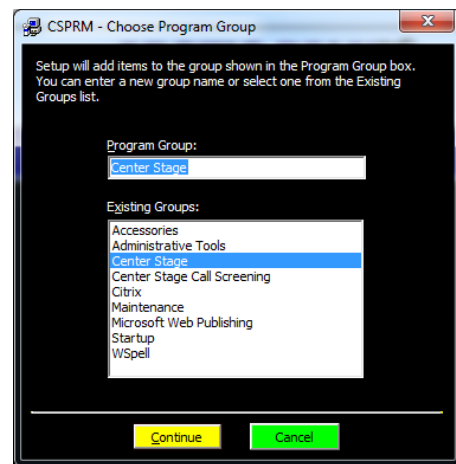
7. Once the Path is correct Click the Green Computer Icon to continue with the installation



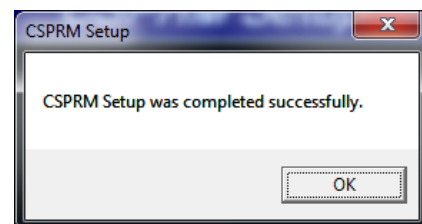
8. Read the License Agreement when displayed and click the green I Agree to continue with the installation or click the red I Disagree to cancel the installation.



9. Select the Start Menu Item where you would like the CSPRM Shortcut to be placed and click the yellow Continue command.  
The Icon will also be added to the Desktop and can be copied to the Start Up Directory to ensure the program is restarted when the computer is re-booted.



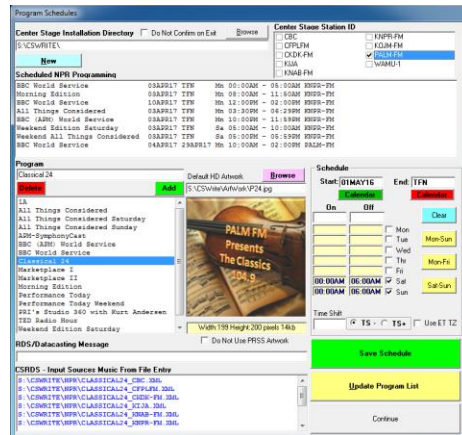
10. CSPRM will now be installed in the selected directory, the icons will be added to the Start Menu and the Desktop and the installation is complete



## Configuring CSPRM

The first time you run CSPRM you will receive a message about configuring CSPRM and be taken to the Program Schedules Window. To add, delete or modify Public Radio Programming, Select Program Schedules from the Tools Menu.

**Note: When minimized CSPRM will be in the System Tray. To Access the program click the arrow (normally bottom right next to the date and time) and Right Click the CSPRM icon and select Restore.**



1. Ensure the Center Stage Installation Directory is Correct	This will be where CSRDS and the other Center Stage Live programs are installed.
2. Select the Station ID that this program is to be used.	Station ID's are defined in the CSScheduler module of the Center Stage package. In CSScheduler select Stations and Logos from the Tools menu to add or remove station ID's.
3. Select the program to be used.	Once Selected, the bottom left area will display the file(s) to be monitored by CSRDS. Once configured, in CSRDS add these files to the Music From File area for a single program or Select CSRAS and the music format, Click the Green Categories command and select all CSPRM files to be monitored.
4. Select the Start Date as to when this program will be used.	The Start date is the first date CSPRM will start monitoring MetaPub for now playing information for the select program.
5. Select the End Date or enter TFN for Until Further Notice.	The End date is the last date CSPRM will monitor MetaPub for the programming content.
6. Enter the On and Off times for this Program	The On and Off times will be based on your local computer time. The MetaPub data is in Eastern Time.
7. RDS Datacasting Message	Use this area to add a "Static" message to be used when the scheduled program is playing but does not have any metadata for the current segment.
8. If desired, use the Browse command to select a graphic for The Artist Experience.	Select a JPG or PNG file to use with this program if artwork is not available from MetaPub.
9. Do Not Use PRSS Artwork	Select this option to use your own artwork instead of MetaPub Artwork,
10. Time Shifting	If not in the ET Time Zone, use leave all Time settings blank for a live broadcast, "Use ET TZ" if airing the program at the same day part as ET. Eg what played at 8am ET will play at 8AM PT, or use the TS+ or TS- to time shift the metadata from your Time to the desired ET time.
11. Use the Green Save Schedule command to update the schedule.	To modify a schedule, double click the entry in the top portion of the window, make your changes and click the green Save Schedule or the Red Delete Schedule commands.

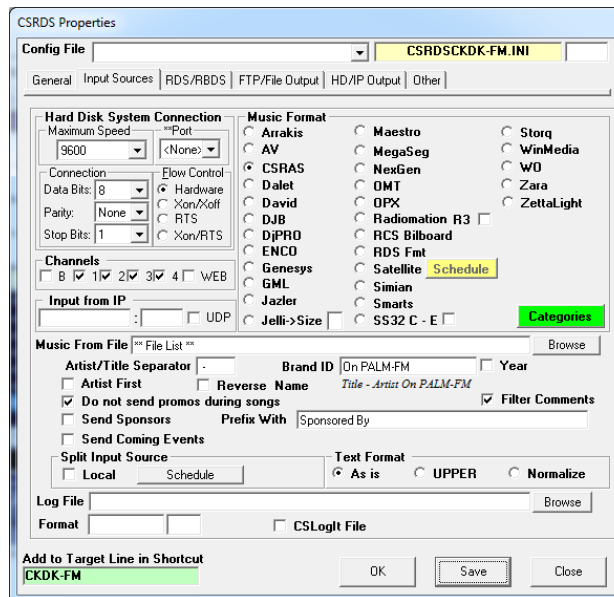
## Configuring CSRDS to Post Data from CSPRM

This section covers the specifics for configuring CSRDS to capture data from CSPRM and post it to the various devices and services. For details on configuring CSRDS follow the instructions in the CSRDS Configuration Guide located in the PDF directory of the ARCTICPALM\Center Stage Live CD\PDF directory included in the Center Stage Live install set.

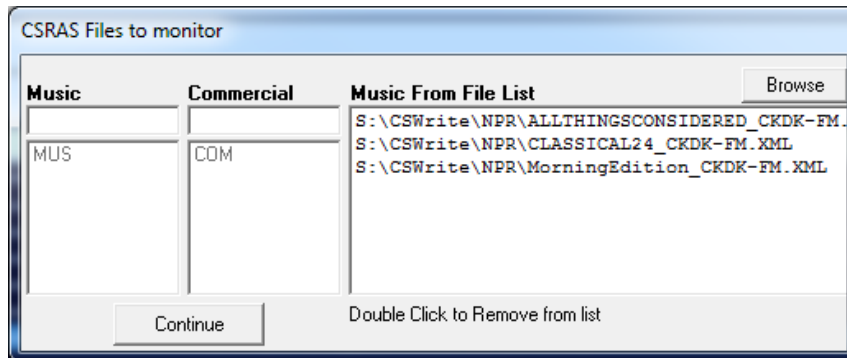
### CSRDS Input Sources Tab

When running PRSS programming all day everyday configure a local instance of CSRDS as follows:

1. In CSRDS select Properties from the Tools Menu and select the Input Sources Tab.



2. Select CSRAS as the Music Format
3. Click the Green Categories Tab

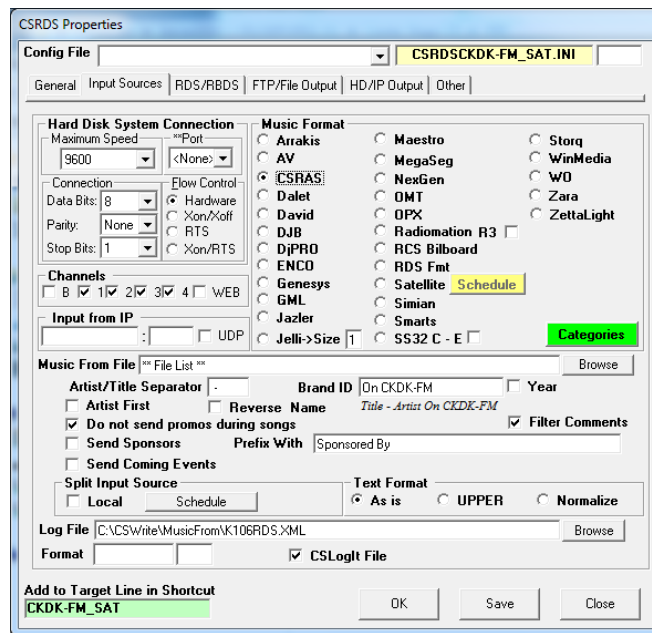


4. Use the Browse command to select the CSPRM files created in CSPRM. These will be located in the NPR subdirectory of the Center Stage Live installation directory.
5. When all files are selected click Continue
6. Click OK to Save the changes and F5-Start to put CSRDS back On-Line.

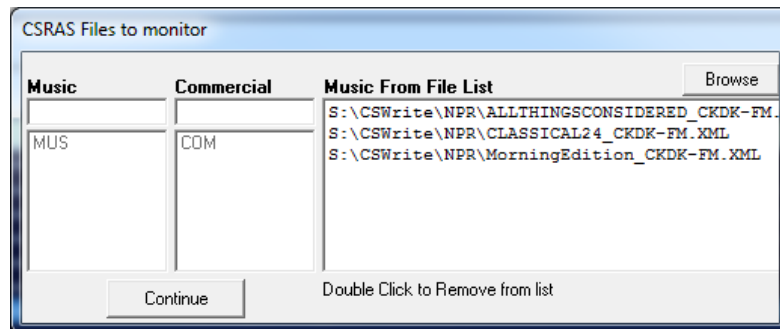
## CSRDS Input Sources Tab – Satellite Instance

When running PRSS programming for selected day parts you will need to configure a “Satellite/Remote” instance of CSRDS. To do this:

1. In the local instance that will be used outside of the PRSS scheduled periods select Properties from the Tools Menu and select the Input Sources Tab.
2. In the “Split Input Sources” section select Local.
3. Click OK to save the settings and return to the main controller window.
4. Click F5-Start to put CSRDS back on-line.
5. Right Click on the Desktop and select New Shortcut
6. Use the browse command to select the CSRDS.exe (application) in the Center Stage Live Installation directory
7. Click Next and Change the name to reflect the Satellite instance
8. Start CSRDS using the new Icon and select Properties from the Tools Menu. This will start the local instance which will be shutdown as soon as you open the Properties window.
9. Uncheck the Local option in the Split Input Sources section.

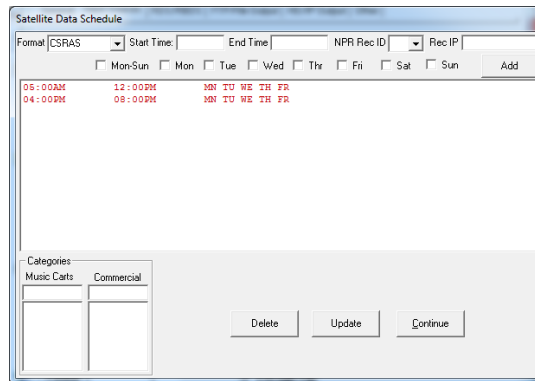


10. Select CSRAS as the Music Format
11. Click the Green Categories Tab



12. Use the Browse command to select the CSPRM files created in CSPRM. These will be located in the NPR subdirectory of the Center Stage Live installation directory.
13. When all files are selected click Continue
14. Select Satellite in the Music Format Section

- Click the yellow Schedule command



- Enter CSRAS as the format
- Enter the Start and end time to use the PRSS programming
- Select the Days to use the PRSSS programming
- Click Add to add the schedule
- Repeat until all of the PRSS schedules are entered
- Click Update to save the Schedules
- Click Continue to return to the Input Sources Tab
- Select CSRAS as the Music Format
- Click OK to Save the changes. This will display a message about creating a shortcut to the instance with the command like to add to the shortcut. Click OK
- Click F5-Start to put CSRDS back On-Line.
- Right Click on the desktop shortcut and add the command line as shows in the display. Eg: the local instance would be C:\CenterStage\CSRDS.exe PALM-FM and the satellite instance would be C:\CenterStage\CSRDS.exe PALM-FM\_SAT.