

## Overview

When the Center Stage Live remote scheduler (CSRemote) is installed on a remote computer, the program must be authenticated to provide access to the host site and ensure the proper categories, pages, etc are used. The authentication file is created using the file monitoring module **CSPostIt**.

Normally the authentication process will complete the configuration of CSRemote. However, if changes are required they may updated using CSRemote or sending a new configuration file to the remote user.

Using CSPostIt to create an encrypted configuration file, we send that file to the remote user who has downloaded and installed CSRemote from

<http://www.arcticpalm.com/downloads/csremote.exe>.

We then run CSRemote on the remote computer and select **Authentication Access** from the Tools Menu. When prompted, we browse to the configuration file received from the host site and open the file. Once updated, the program will exit and when restarted we are configured as per the settings created at the host site.

## CSRemote Installation

Download the CSRemote installation set from: <http://www.arcticpalm.com/downloads/csremote.exe>

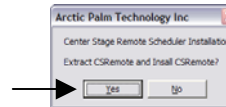
1. When Prompted select **Run**.



2. If you receive the Security warning, **Click Run**.



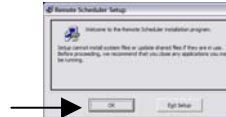
3. When the Installation Window appears, **Click Yes**.



4. When the Extractor window appears **Click Setup**



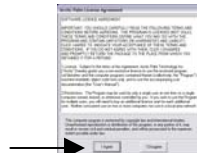
5. Ensure any Center Stage programs are not running and **Click OK** to start the installation.



6. You will now be asked where you would like CSRemote installed. The default will be c:\Center Stage. If you wish to install it in another directory, use the Change Directory command to change the installation directory. Otherwise, **Click the Computer Icon** to continue with the installation process.



You will now receive the Arctic Palm License Agreement. Please read carefully and **Click I Agree** to continue with the installation. If you do not agree, click I Disagree and the CSRemote software will be removed from your workstation.



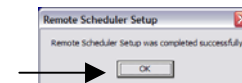
You may now choose which start menu items you would like CSRemote to be placed. Just **Click Continue**.



During the installation process, we will check the software being installed on the computer. If we find newer versions, you will receive the Version Conflict window. **Click Yes** to keep your existing versions.



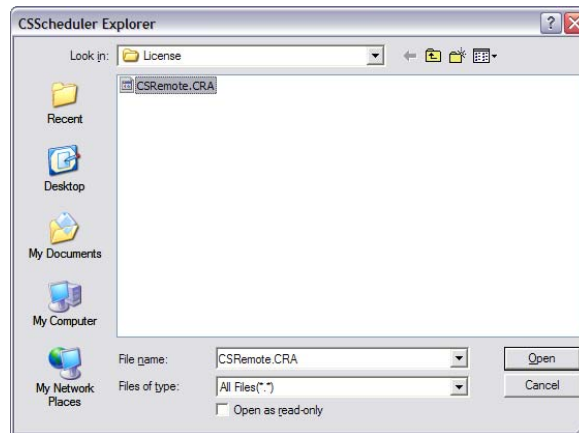
At this point, CSRemote is installed on your computer and you will have a CSRemote icon on your desktop **Click OK** to complete the installation.



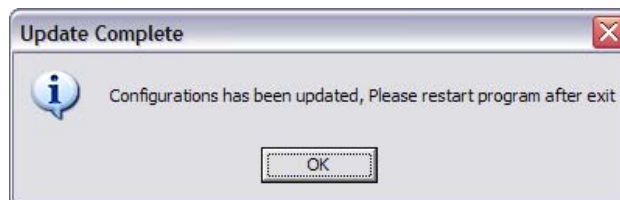
## Configuring CSRemote

CSRemote is configured using a configuration file provided by the host site. If the file was sent via E-Mail, use the Save Attachments command in the File Menu of your e-mail program. Be sure to record where you saved the file. If it came on a floppy disk, CD, thumb drive, etc place the device in the appropriate slot.

To configure CSRemote, select Update Configuration File from the Tools Menu. This will open the CSScheduler Explorer window. Use this window to find the configuration file and click Open.



If this is a valid CSRemote Configuration file the program will respond with:



Click OK to exit the program and double click the CSRemote Icon on the desktop to restart. When restarted, CSRemote will have the settings as supplied by the host site. This will be most noticeable on the Tab names, and access controls.

For details on using CSRemote, see the CSScheduler.PDF in the CSRemote installation directory.