

Adding DTS Connected Radio™ to your Center Stage Live Data Casting system

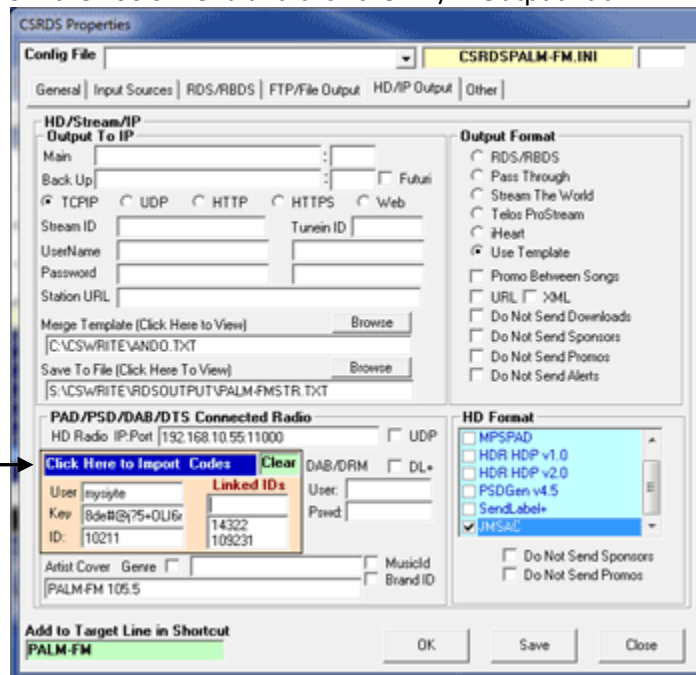
Prerequisites: Your DTS Connected Radio™ credentials and CSRDS version 9.6.5000 or higher.

To Get your DTS Connected Radio™ Credentials

1. Download the [DTS Credentials.pdf](#) and print 1 copy for each station (broadcast)
2. Enter the Call letters and location information for each station (Parent) and any linked broadcasts (HD, Simulcast/Translators) associated with the Parent station.
3. Scan the completed document and e-mail it to support@arcticpalm.com
4. When received the information will be used by DTS Connected Radio to generate your DTS Credentials file which will be e-mailed to the address included in the document.

Configure CSRDS for DTS Connected Radio™

1. Save the DTS Connected Radio™ credentials file on the computer running CSRDS.
2. In CSRDS Select Properties from the Tools Menu and click the HD/IP Output Tab.



Click to Browse to Credentials file or Paste from Clipboard

3. Click the Blue "Import DTS Credentials" area and use the Browser window to select the credentials file for this instance of CSRDS.
4. Once selected you will be prompted to confirm the credentials are for the correct station.
5. Once confirmed, Click OK in the Properties Window to Save the settings and return to the main CSRDS Controller Window.
6. Click F5-Start to put CSRDS back On-Line
(Note: Repeat this process for all satellite/remote instances of CSRDS)

CSRDS will now post your metadata to Hybrid Receivers and retrieve artist images for your Artist Experience HD Radio stations. (Note: artwork is only returned when the artist experience is selected.)

Update your Center Stage Live Software

1. Ensure your support license is up to date. If not contact Arctic Palm Sales to bring your support license up to date and activate your live updater.
2. Exit all Center Stage Live programs, Run CSScheduler and select Check For Updates from the Tools menu.
3. Follow the on-line instructions
4. When completed, restart all Center Stage Live programs and configure CSRDS for DTS Connected Radio as shown above.

Not a Center Stage Live Site Get the Free 30-day Trial

If you are not a current Center Stage Live (CSRDS) site and would like to try Center Stage Live check the CSRDS Quick Start.pdf. Starting about page 7 there is some information to consider before installing Center Stage followed by the link for the download (trial), the download, installation and basic configuration instructions. Detailed instructions are in the CSRDS Configuration Guide in the PDF directory on the install set. This is a free 30-day trial and should you decide to purchase Center Stage Live you will receive an access code that turns the trial into a live installation.